

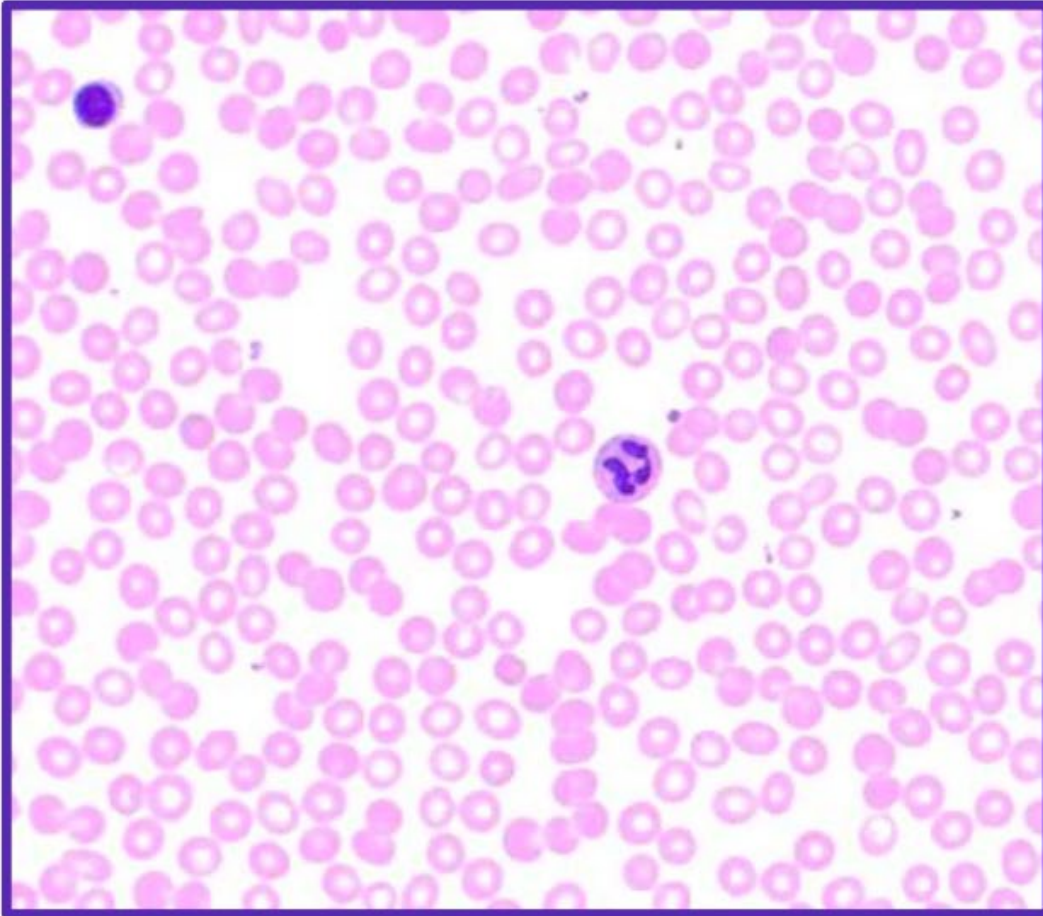
Analysing Irregular Blood Smears

IMAGE 1

Compare the regular blood smear with the irregular smear.

- 1) What differences can you observe?
- 2) What inferences can you make about the irregular blood?

Regular Blood Smear



Irregular Blood Smear

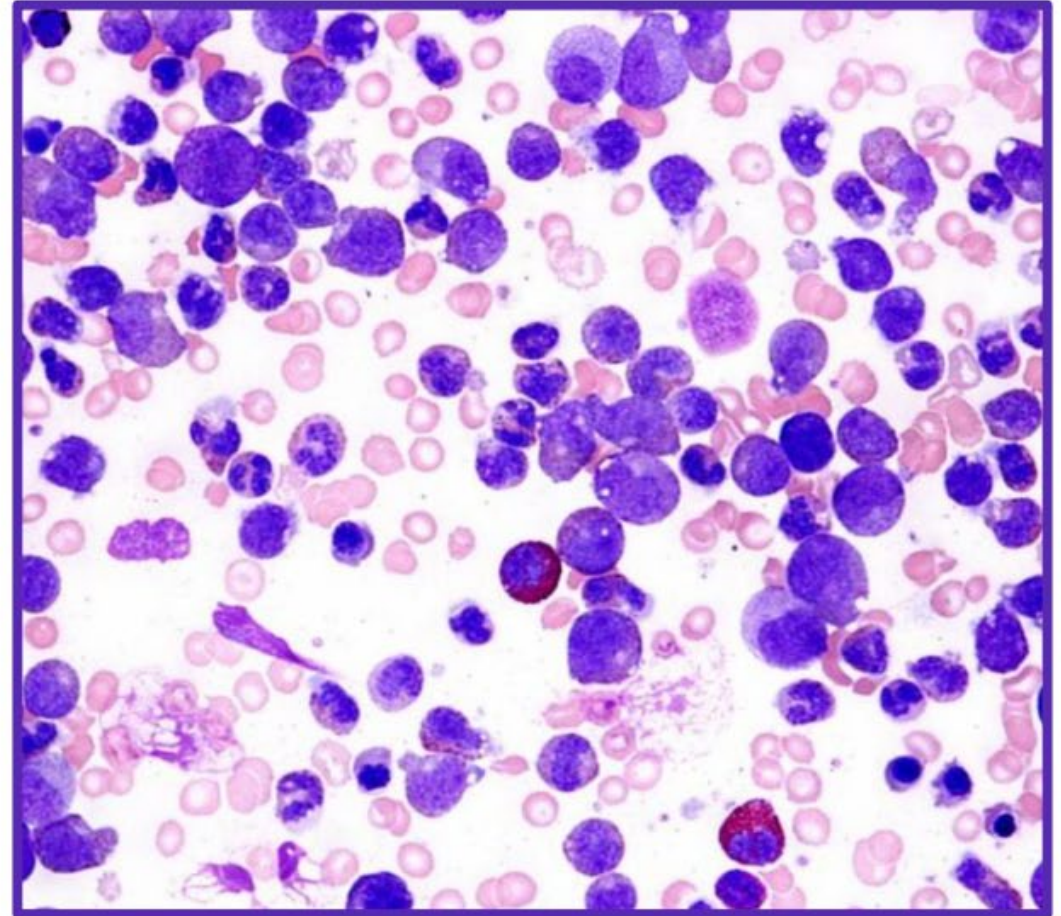
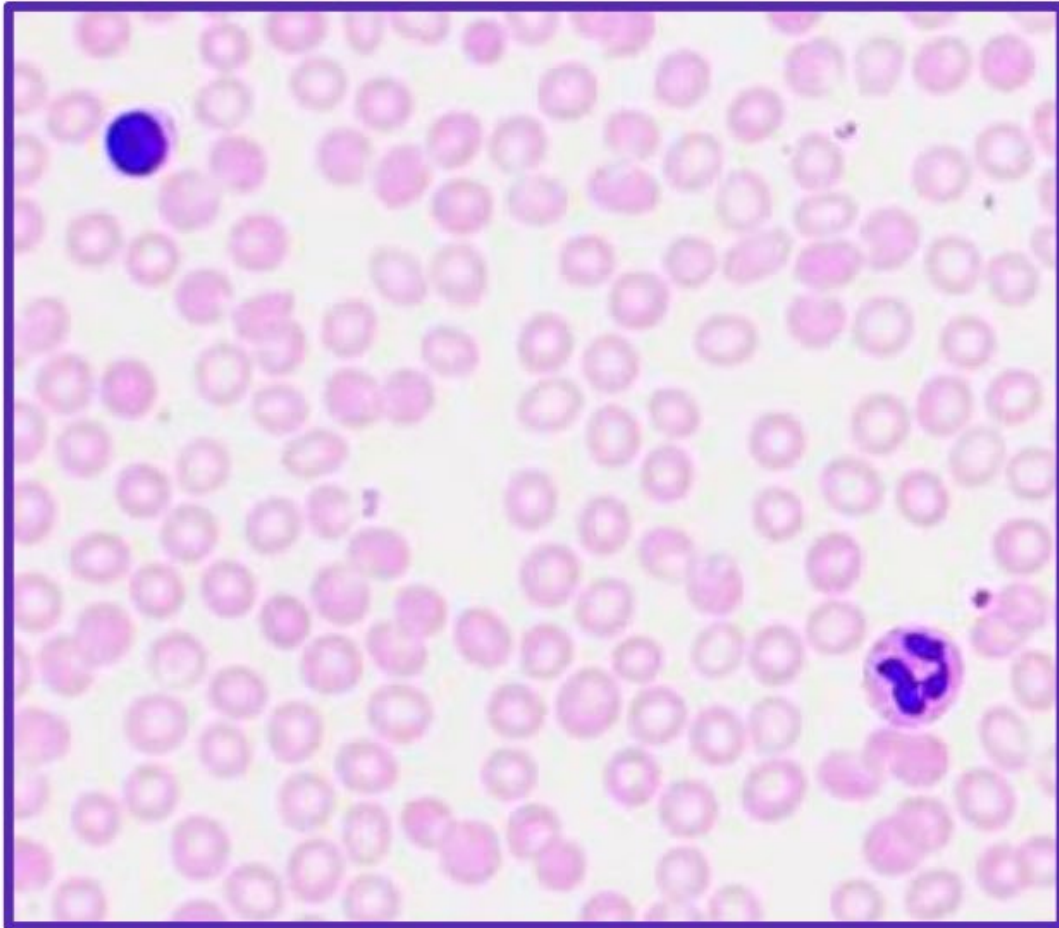


IMAGE 2

Compare the regular blood smear with the irregular smear.

- 1) What differences can you observe?
- 2) What inferences can you make about the irregular blood?

Regular Blood Smear



Irregular Blood Smear

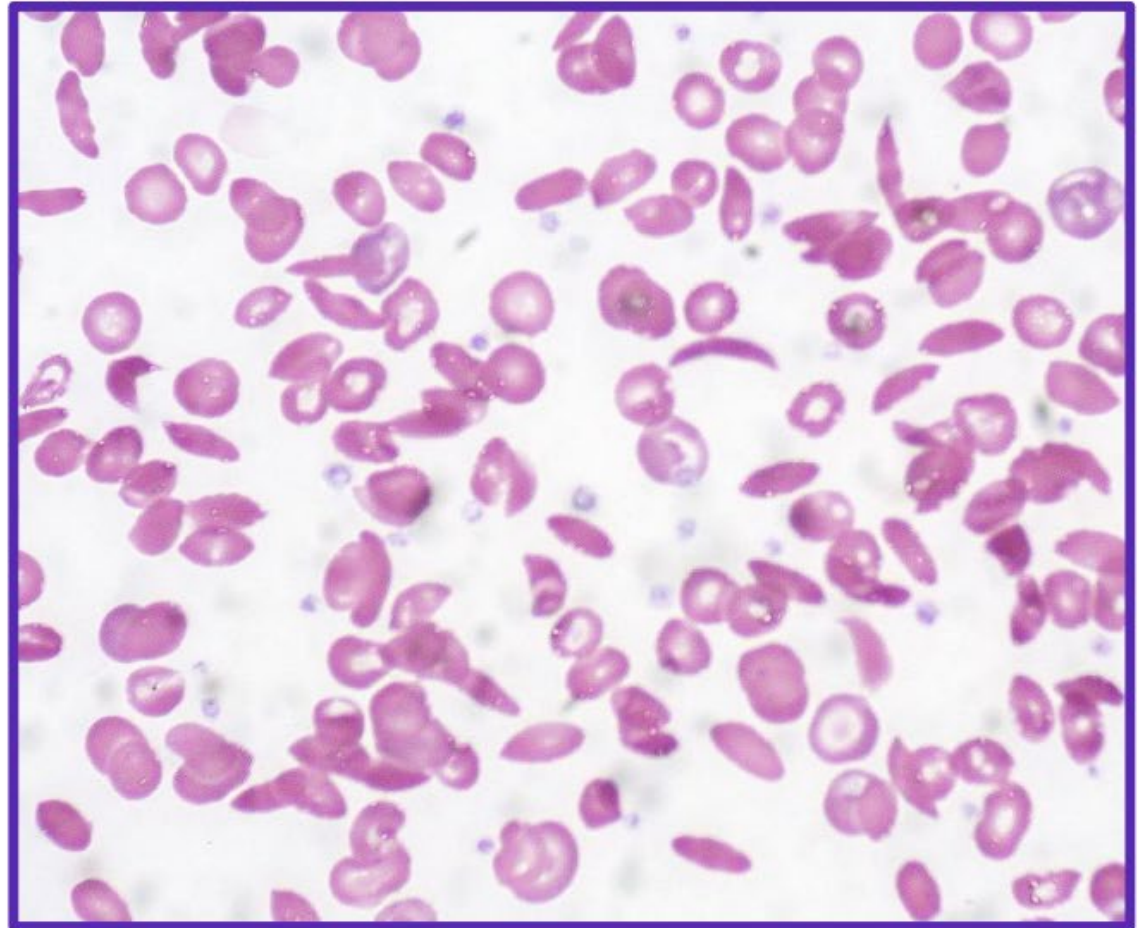
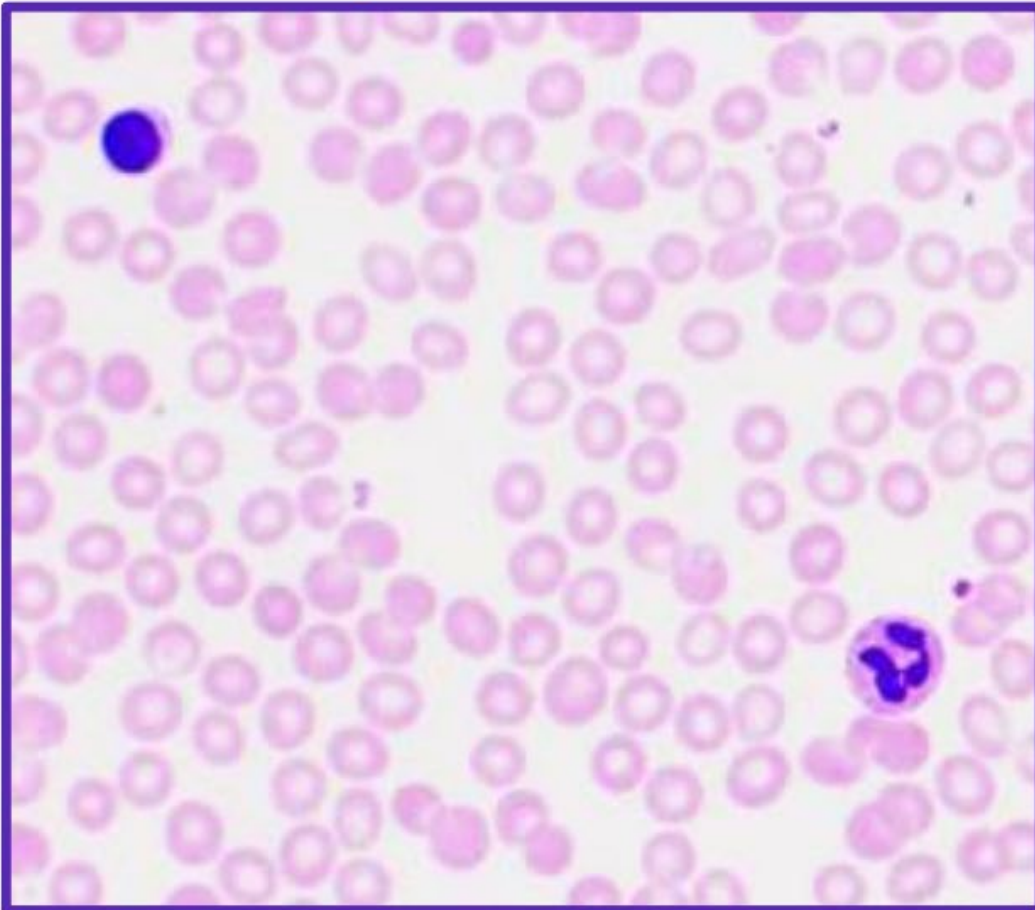


IMAGE 3

Compare the regular blood smear with the irregular smear.

- 1) What differences can you observe?
- 2) What inferences can you make about the irregular blood?

Regular Blood Smear



Irregular Blood Smear

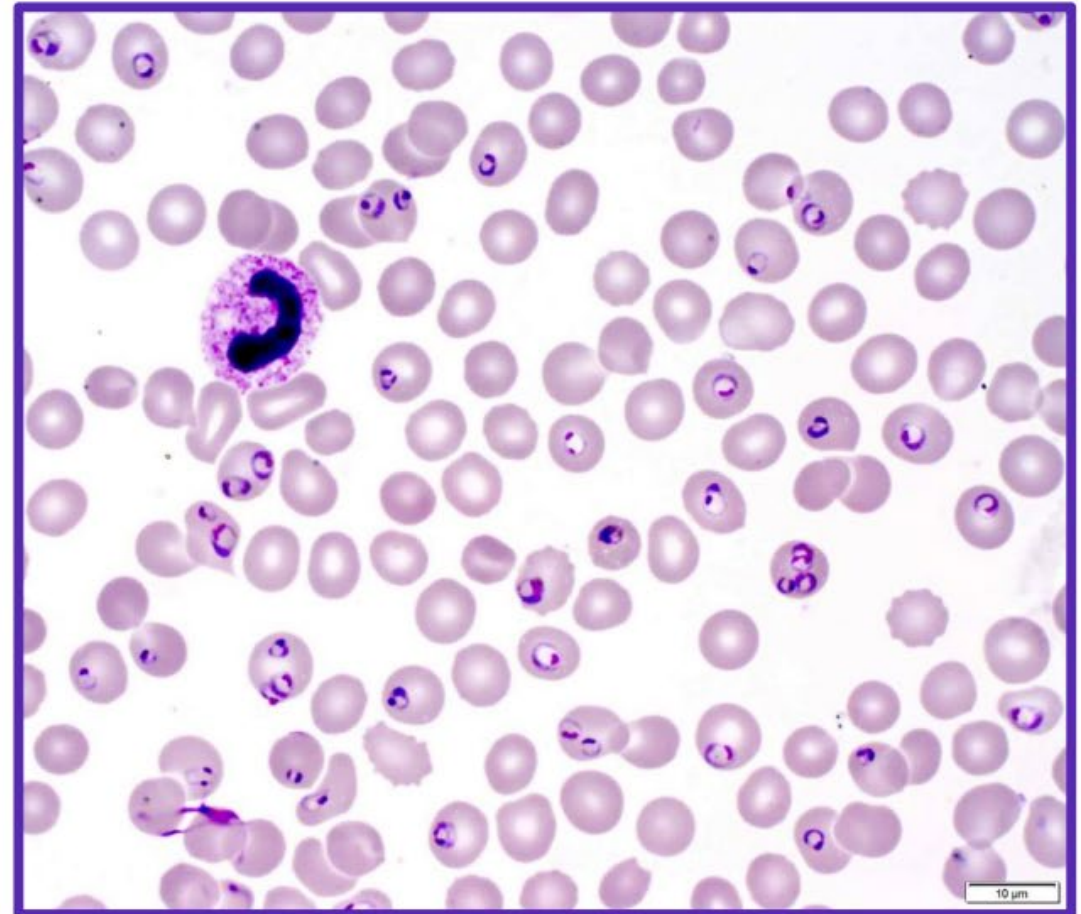
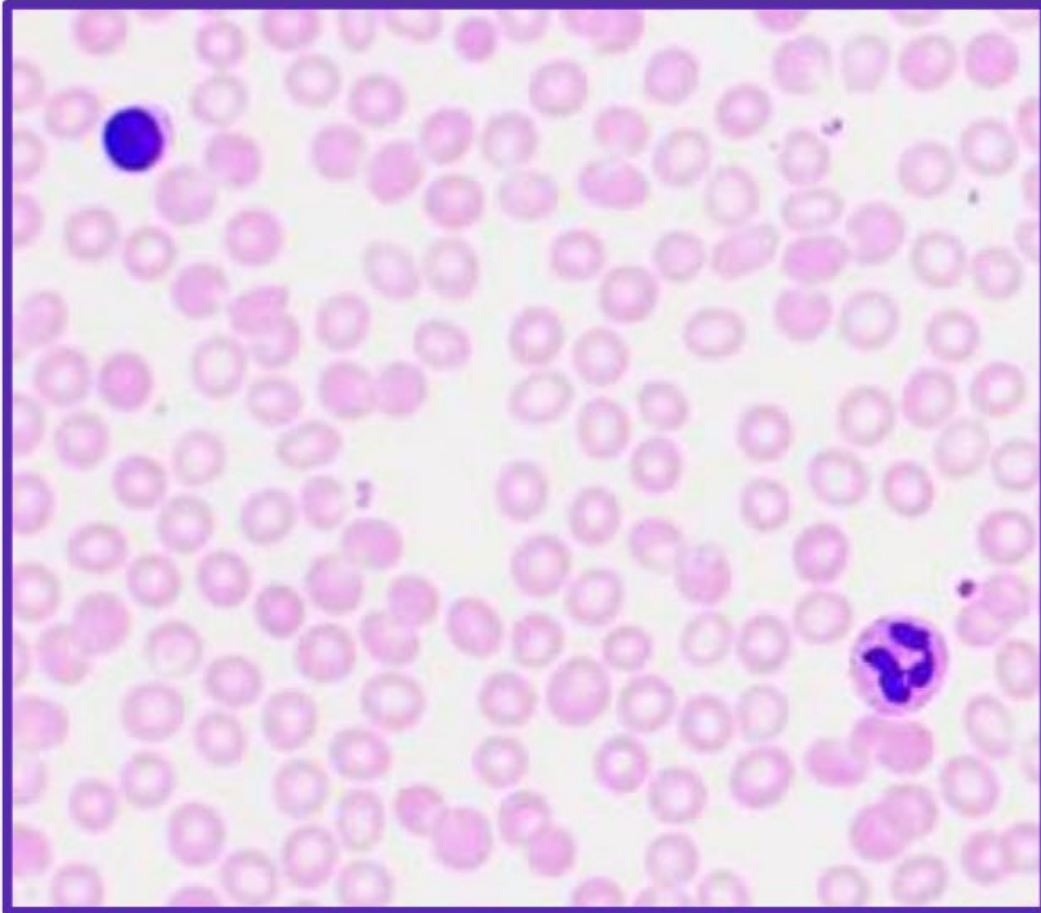


IMAGE 4

Compare the regular blood smear with the irregular smear.

- 1) What differences can you observe?
- 2) What inferences can you make about the irregular blood?

Regular Blood Smear



Irregular Blood Smear

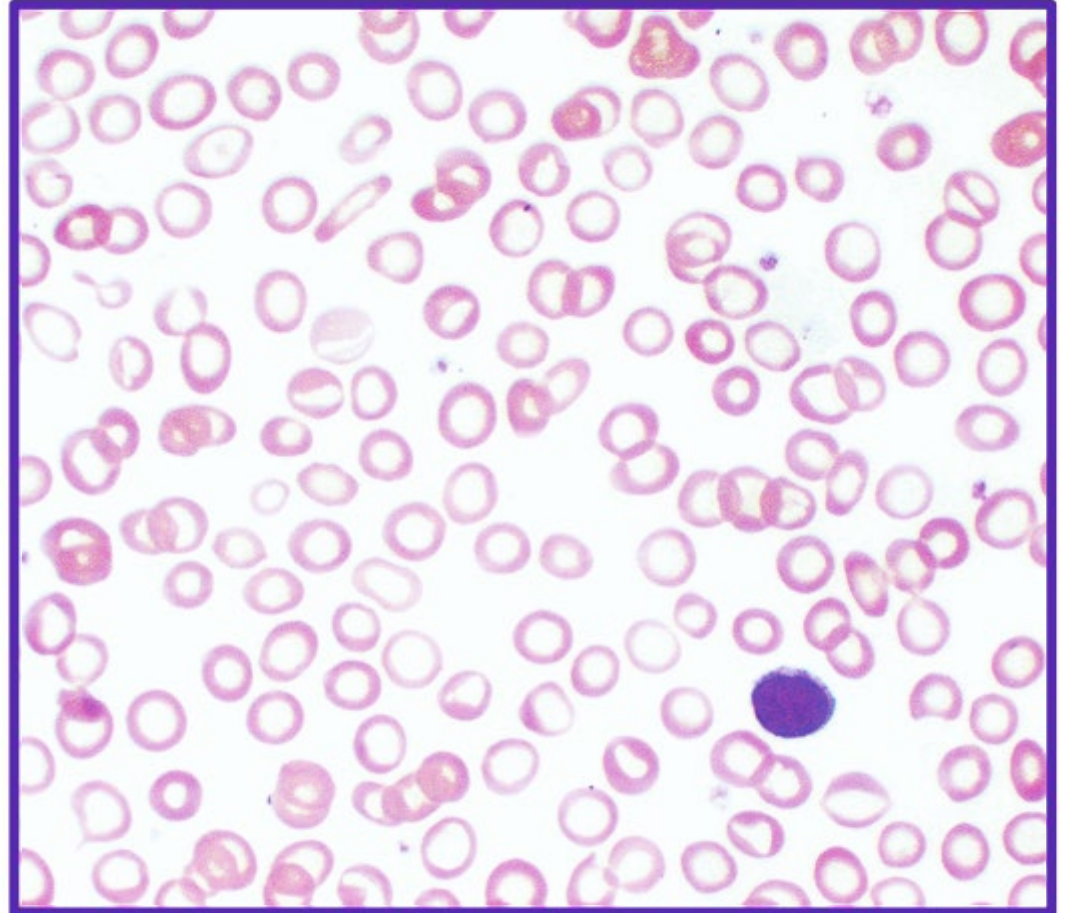
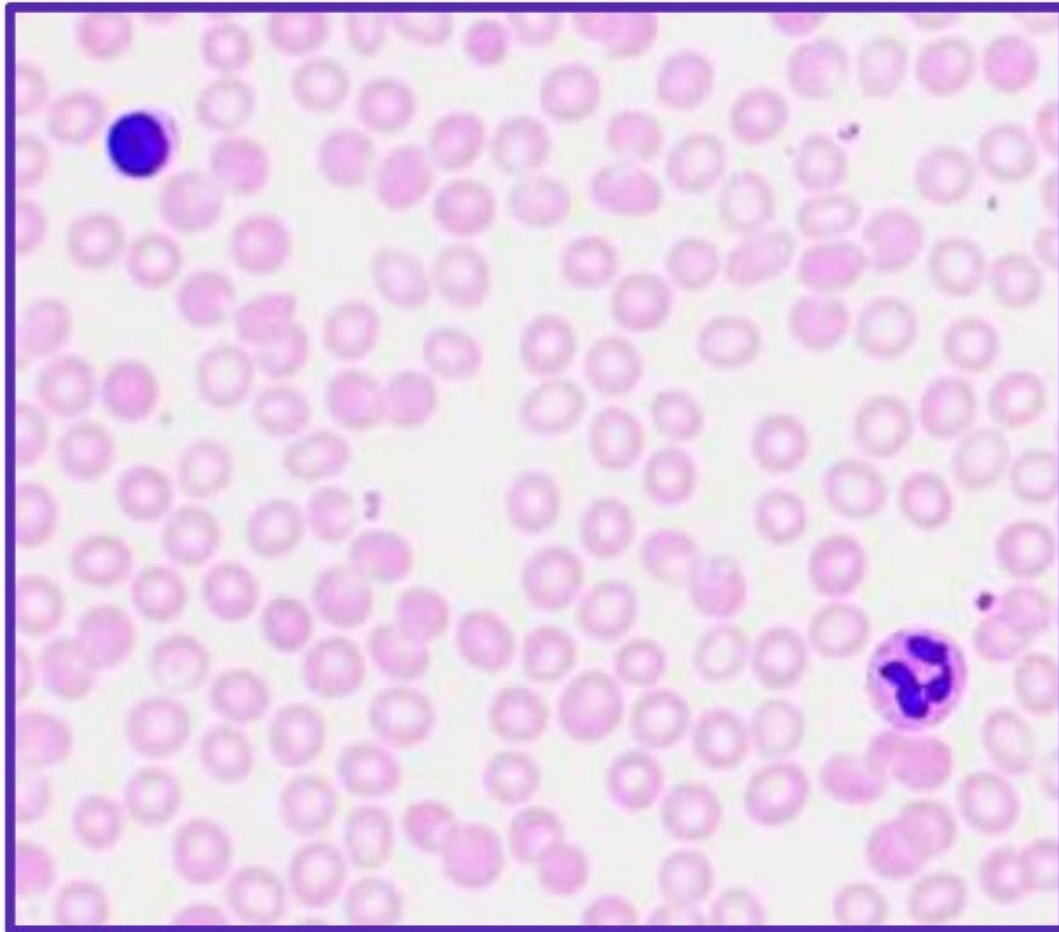


IMAGE 5

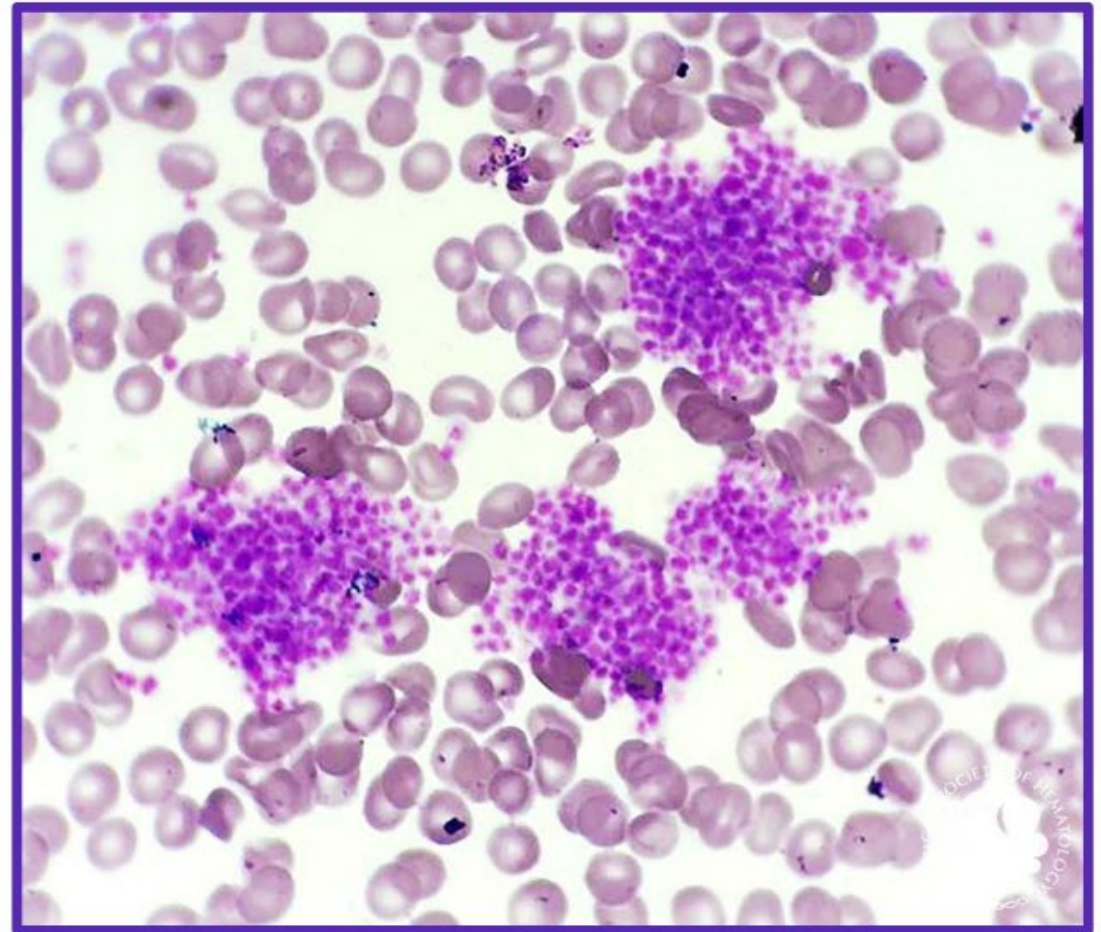
Compare the regular blood smear with the irregular smear.

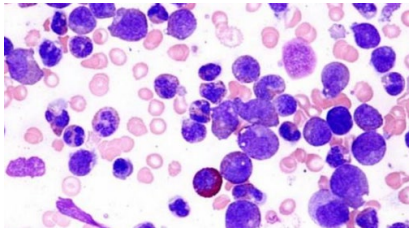
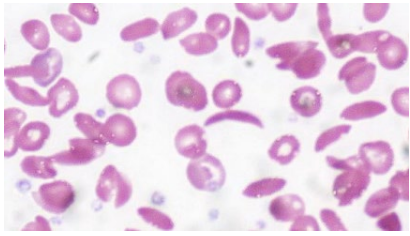
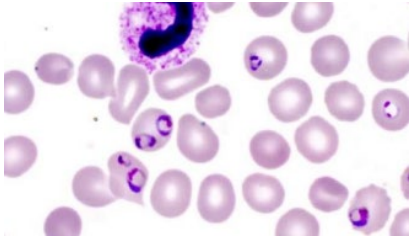
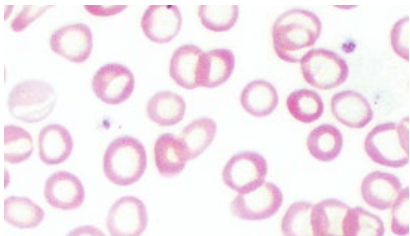
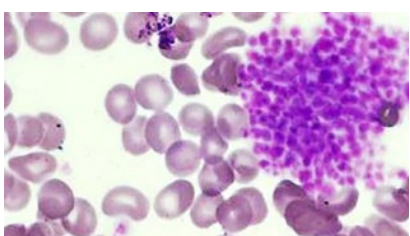
- 1) What differences can you observe?
- 2) What inferences can you make about the irregular blood?

Regular Blood Smear



Irregular Blood Smear



	Irregular Smear	Model / Suggested Responses
Image 1		Excess WBC. Individual is likely sick with an infection or leukemia. <i>(Leukemia blood smear).</i>
Image 2		Red blood cells are misshaped/disk shaped. Oxygen carrying capacity may be affected. <i>(Sickle cell anemia blood smear).</i>
Image 3		Red blood cells have dark spots suggesting infection. Oxygen carrying capacity may be affected. <i>(Malaria blood smear).</i>
Image 4		Red blood cells appear hollow / lighter in colour. Suggests less haemoglobin. Oxygen carrying capacity may be reduced. <i>(Hypochromatic anemia blood smear).</i>
Image 5		Platelets are grouped in mass. Suggests blood clotting.

The materials provided in this resource are for educational purposes only. This material has been reproduced and communicated in accordance with fair use for nonprofit educational purposes. Any further reproduction or communication of this material by you may be the subject of copyright protection.